

www.ifssh2010.com



# IFSSH 2010

11<sup>th</sup>

Triennial Congress of the International  
Federation of Societies for Surgery of the Hand

**31 October - 4 November 2010**

**Sheraton Grande Walkerhill Hotel  
Seoul Korea**



Second Announcement



The  
On-line  
Abstract  
Submission is  
**OPEN NOW.**

Hosted by

The Organizing Committee of the 11<sup>th</sup> IFSSH Congress  
The Korean Society for Surgery of the Hand



# IFSSH 2010

**11<sup>th</sup>** Triennial Congress of  
the International Federation of Societies  
for Surgery of the Hand

31 October - 4 November 2010

**Sheraton Grande Walkerhill Hotel  
Seoul Korea**

## Important Dates

|                                      |                   |
|--------------------------------------|-------------------|
| Deadline for Abstract Submission     | 1 May 2010        |
| Notification of Abstract Acceptance  | 1 June 2010       |
| Deadline for Early Bird Registration | 30 June 2010      |
| Deadline for Hotel Reservation       | 30 September 2010 |



# Contents

|  |    |
|--|----|
| Invitation from the President of the IFSSH ..... | 4  |
| Invitation from IFSSH2010 Chairman .....         | 4  |
| <b>Organization</b> .....                        | 5  |
| <b>Program at a Glance</b> .....                 | 5  |
| <b>Swanson Lecturer</b> .....                    | 6  |
| <b>Plenary Speakers</b> .....                    | 6  |
| <b>Symposia Organizers</b> .....                 | 6  |
| <b>Invited Speakers</b> .....                    | 7  |
| <b>Call for Abstracts</b> .....                  | 9  |
| <b>Hand Surgery Textbook</b> .....               | 10 |
| <b>Registration</b> .....                        | 11 |
| <b>Accommodations</b> .....                      | 12 |
| <b>Commercial Exhibition</b> .....               | 13 |
| <b>Useful Information</b> .....                  | 13 |
| <b>Tour Programs</b> .....                       | 15 |





11<sup>th</sup> Triennial Congress of the International  
Federation of Societies for Surgery of the Hand  
31 October - 4 November 2010  
Sheraton Grande Walkerhill Hotel Seoul Korea

## Invitation from the President of the IFSSH



Welcome Address from the  
President of the IFSSH

On behalf of all of the member societies of the International Federation of Societies for Surgery of the Hand (IFSSH), I enthusiastically encourage you to attend the 11<sup>th</sup> Congress of the IFSSH in Seoul, Korea from October 31 to November 4, 2010. Dr. Moon Sang Chung and his Organizing Committee have been ambitiously preparing for this triennial Congress for several years and I can assure it will be a superb meeting to remember.

I have had the pleasant opportunity to visit this prosperous country on a few occasions and have been truly impressed by the variety of treasures that Korea offers. The blend of a history and culture of thousands of years with the country's modern prosperity, a product of their hard working people, make Seoul an astonishing city to visit.

In Seoul with its remarkable contrast of the old and new, you will find the people genuinely gracious, hospitable and friendly in every part of the city. The unique cuisine of the country offer a great variety of culinary delights.

As you are aware, Korea has been an international leader in electronic communications. While the universal growth of information technology has made gathering knowledge about hand surgery easier, direct personal contact with leading hand surgeons from around the world is more productive, rewarding and enjoyable. Your Federation is now in a position to improve care of hand problems throughout the world.

Come join us in Seoul where we can directly share our knowledge and skills and renew our old friendships as well as establish new ones.

See you in Seoul.

James R. Urbaniak, MD  
President, IFSSH

## Invitation from IFSSH2010 Chairman



On behalf of the Organizing Committee and the Korean Society for Surgery of the Hand, it is my great pleasure and honor to invite you to the 11<sup>th</sup> Congress of the International Federation of Societies for Surgery of the Hand to be held in Seoul, Korea, from 31

October to 4 November 2010. We had been waiting and preparing for this invaluable opportunity for many years to welcome hand surgeons from all over the world to Seoul. At the start of a new decade, the congress aims to promote scientific development in this challenging field and strengthen our friendship.

The scientific program will provide an opportunity for all participants to exchange the latest information and ideas, encouraging debate in the many issues in hand surgery, with your important contributions of free paper and poster presentations. High standard instructional lectures, symposia, and workshops will be also provided with the contribution of outstanding hand surgeons with their expertise.

Seoul is one of the most dynamic and safest meeting destinations and left a shining impression on the world with its successful staging on the 1988 Summer Olympic and the 2002 FIFA World Cup. Excellent facilities and the natural beauty combined with its 5000-year historical heritage will make Seoul an attractive place to visit where an old and new coexist in harmony.

All members of the Korean Society for Surgery of the Hand look forward to welcoming you at the 11<sup>th</sup> IFSSH Congress in Seoul in 2010.

Yours sincerely,

Moon Sang Chung, MD, PhD  
Chairman, 11<sup>th</sup> IFSSH Congress

# Organization

## Congress Chairman

Moon Sang Chung

## Co-Chairmen

Jaiyoung Ryu Jun-O Yoon

## General Secretary

Goo Hyun Baek

## Scientific Program Committee Chairman

Goo Hyun Baek

## Social Program Committee Chairman

Duke Whan Chung

## Information Committee Chairmen

Seok-Whan Song Hyun Oun Hahn

## Financial Committee Chairman

Kwang-Hyun Lee

## Fund-Raising Committee Chairman

Myong Chul Park

## Local Committee Chairman

Woo Kyung Kim

## Related Conference Committee Chairman

Hee Chang Ahn

## Advisory Committee Chairman

Eung Shick Kang

## Advisory Committee Co-Chairmen

Duck Yun Cho Kwang Suk Lee Young-Ho Lee

# Program at a Glance

|           | 31 October<br>Sunday                   | 1 November<br>Monday | 2 November<br>Tuesday                                   | 3 November<br>Wednesday | 4 November<br>Thursday |
|-----------|--|----------------------|---|-------------------------|------------------------|
| Morning   |  | Sessions             | S<br>h<br>o<br>u<br>l<br>d<br>e<br>r<br><br>D<br>a<br>y | Sessions                | Sessions               |
|           |  | Break                |   | Break                   | Break                  |
|           |  | Sessions             |   | Sessions                | Sessions               |
| Noon      |  | Lunch                |   | Lunch                   | Lunch                  |
| Afternoon |  | Sessions             |   | Sessions                | Sessions               |
|           |  | Break                |   | Break                   | Break                  |
|           |  | Sessions             | Sessions  | Sessions                |                        |
| Evening   | Opening Ceremony and Welcome Reception |                      | Gala Dinner   |                         |                        |

※ **Registration desk open**

- 31 October: in the Afternoon
- 1~3 November: Full day
- 4 November: in the Morning





## Swanson Lecturer

Jupiter, Jesse B. (USA)

## Plenary Speakers

Beppu, Moroe (Japan)

Berger, Richard A. (USA)

Brunelli, Giorgio A. (Italy)

Garcia-Elias, Marc (Spain)

Mennen, Ulrich (South Africa)

Minami, Akio (Japan)

Ryu, Jaiyoung (USA)

Soucacos, Panayotis N. (Greece)

Tonkin, Michael (Australia)

Urbaniak, James R. (USA)

Yoshioka, Hiroshi (USA)

\* Alphabetically ordered by last name.

\* This list will be updated.

## Symposia Organizers

Adams, Brian D. (USA)

Adani, Roberto (Italy)

Anantharam, B.A. (India)

Badia, Alejandro (USA)

Beckenbaugh, Robert D. (USA)

Bozentka, David J. (USA)

Chang, James (USA)

Chin, Andrew Y.H. (Singapore)

Clarke, Howard M. (Canada)

Fridén, Jan (Sweden)

Golubev, Igor (Russia)

Gotani, Hiroyuki (Japan)

Grünert, Jörg (Switzerland)

Gupta, Amit (USA)

Gupta, Ranjan (USA)

Hirata, Hitoshi (Japan)

House, James H. (USA)

Imbriglia, Joseph E. (USA)

Innocenti, Marco (Italy)

Jones, Neil F. (USA)

Jupiter, Jesse B. (USA)

Kanaya, Fuminori (Japan)

Kato, Hiroyuki (Japan)

Kok-Poh, Looi (Singapore)

Ladd, Amy L. (USA)

Lalonde, Don (Canada)

Lichtman, David M. (USA)

Lin, Gau-Tyan (Taiwan)

Liverneaux, Philippe (France)

Mass, Daniel P. (USA)

Minamikawa, Yoshitaka (Japan)

Mirza, M. Ather (USA)

Mizuseki, Takaya (Japan)

Moritomo, Hisao (Japan)

Murase, Tsuyoshi (Japan)

Nakamura, Ryogo (Japan)

Neumeister, Michael W. (USA)

Olazábal, Alfredo (Argentina)

Orbay, Jorge L. (USA)

Romanowski, Leszek (Poland)

Ryu, Jaiyoung (USA)

Schenck, Robert R. (USA)

Schuind, Frédéric (Belgium)

Shibata, Minoru (Japan)

Singh, Bijayendra (UK)

Soejima, Osamu (Japan)

Songcharoen, Panupan (Thailand)

Soucacos, Panayotis N. (Greece)

Tanaka, Juichi (Japan)

Tobe, Masahiro (Japan)

Toh, Satoshi (Japan)

Uchiyama, Shigeharu (Japan)

Urbaniak, James R. (USA)

Wahegaonkar, Abhijeet L. (India)

Wang, Xin (China)

Woo, Sang Hyun (Korea)

Yajima, Hiroshi (Japan)

\* Alphabetically ordered by last name.

\* This list will be updated.

## Invited Speakers

- Ahn, Hee Chang (Korea)  
 Allieu, Yves (France)  
 Amadio, Peter C. (USA)  
 Anastakis, Dimitri J. (Canada)  
 Apergis, Emmanuel (Greece)  
 Bae, Donald S. (USA)  
 Baek, Goo Hyun (Korea)  
 Bain, Gregory Ian (Australia)  
 Baker, Mark (Australia)  
 Balakrishnan, G. (India)  
 Beard, Tony (Australia)  
 Becker, Corinne (France)  
 Bijos, Pedro B. (Brazil)  
 Bishop, Allen T. (USA)  
 Boettcher, Richarda (Germany)  
 Bowen, Vaughan (Canada)  
 Breidenbach, Warren C. (USA)  
 Ceruso, Massimo (Italy)  
 Chahidi, Nader (Belgium)  
 Chandraprakasam, T. (India)  
 Chen, Hung-Chi (Taiwan)  
 Cheon, Sang-Jin (Korea)  
 Chick, Grégoire (Switzerland)  
 Cho, Mickey S. (USA)  
 Choi, Alex K.Y. (China)  
 Choi, Seung Suk (Korea)  
 Choi, Soo-Joong (Korea)  
 Chong, Alphonsus Ks (Singapore)  
 Chow, Shew-Ping (China)  
 Chuang, David Chwei-Chin (Taiwan)  
 Chulovskaya, Irina G. (Russia)  
 Chun, Samuel (USA)  
 Chung, Duke Whan (Korea)  
 Chung, Kevin C. (USA)  
 Chung, Yang-Guk (Korea)  
 Coleman, Steve (Australia)  
 Conolly, Bruce (Australia)  
 Culp, Randall W. (USA)  
 Day, Charles S. (USA)  
 Demirkan, Ferit (Turkey)  
 Demirtas, A. Mehmet (Turkey)  
 Dreyfuss, Uriel Y. (Israel)  
 Eaton, Charles J. (USA)  
 Ekenstam, Fredrik af (Sweden)  
 Ekin, Ahmet (Turkey)  
 Eo, Su Rak (Korea)  
 Eric, Drazan (Bosnia&Herzegovina)  
 France, John (USA)  
 Fukumoto, Keizo (Japan)  
 Geissler, William B. (USA)  
 Georgescu, Alexandru (Romania)  
 Girsch, Werner (Austria)  
 Golubev, Igor (Russia)  
 Gong, Hyun Sik (Korea)  
 Gousheh, Jamal (Iran)  
 Gupta, Amit (USA)  
 Gupta, Ashok (India)  
 Gupta, Ravi K. (India)  
 Hagert, Elisabet (Sweden)  
 Hahn, Hyun Oun (Korea)  
 Han, Kyeong Jin (Korea)  
 Han, Soo Hong (Korea)  
 Hems, Tim (UK)  
 Hentz, Vincent R. (USA)  
 Heo, Chan Yeong (Korea)  
 Heo, Youn Moo (Korea)  
 Herren, Daniel (Switzerland)  
 Hicks, Roland (Australia)  
 Hierner, Robert (Germany)  
 Hinzpeter, Daniel A. (Chile)  
 Hirasawa, Yasusuke (Japan)  
 Hirase, Yuichi (Japan)  
 Ho, Pak-Cheong (HongKong)  
 Hong, Joon Pyo (Korea)  
 Horii, Emiko (Japan)  
 Horiuchi, Yukio (Japan)  
 Hotchkiss, Robert N. (USA)  
 House, James H. (USA)  
 Hovius, Steven (The Netherlands)  
 Hu, Shaonan (China)  
 Hung, Leung-Kim (China)  
 Hunt, III, Thomas R. (USA)  
 Hwang, John J. (USA)  
 Hwang, So-Min (Korea)  
 Idler, Richard S. (USA)  
 Ikegami, Hiroyasu (Japan)  
 Ikuta, Yoshikazu (Japan)  
 Ilyas, A. M. (USA)  
 Imatani, Junya (Japan)  
 Incoll, Ian (Australia)  
 Innocenti, Marco (Italy)  
 IP, Josephine Winf-Yuk (HongKong)  
 Ishikawa, Hajime (Japan)  
 Jeon, In-Ho (Korea)  
 Jeong, Seong-Ho (Korea)  
 Jones, Neil F. (USA)  
 Jørgsholm, Peter (Sweden)  
 Jung, Jun Mo (Korea)  
 Jung, Sung Gyun (Korea)  
 Kairy, Ramdew Ram (Bangladesh)  
 Kalam, Abul (Bangladesh)  
 Kaleli, Tufan (Turkey)  
 Kang, Ho Jung (Korea)  
 Kawabata, Hidehiko (Japan)  
 Kawai, Hideo (Japan)  
 Kebrle, Radek (Czech Republic)  
 Ki, Sae Hwi (Korea)  
 Kim, Byung Sung (Korea)  
 Kim, David C. (USA)  
 Kim, Hyong-Min (Korea)  
 Kim, Jae Kwang (Korea)  
 Kim, Jeong Tae (Korea)  
 Kim, Ji Yeong (Korea)  
 Kim, Jin Ho (Korea)  
 Kim, Jin Sam (Korea)  
 Kim, Jin Young (Korea)  
 Kim, Jin Soo (Korea)  
 Kim, Jong-Pil (Korea)  
 Kim, Joo Hak (Korea)  
 Kim, Kwang Seog (Korea)  
 Kim, Min Bom (Korea)  
 Kim, Woo Kyung (Korea)  
 Kim, Yong Kyu (Korea)  
 Kim, Sang Soo (Korea)  
 Kim, Yong Jin (Korea)  
 King, Graham J.W. (Canada)  
 Kinnen, Louis (Belgium)  
 Kobata, Yasunori (Japan)  
 Kojima, Tadao (Japan)  
 Koman, L. Andrew (USA)  
 Komurcu, Mahmut (Turkey)  
 Kopylov, Philippe (Sweden)  
 Krimmer, Hermann (Germany)  
 Kruavit, Arthi (Thailand)  
 Kwon, Bong Cheol (Korea)  
 Kwon, Sung Tack (Korea)  
 Kwon, Young Ho (Korea)  
 Ladd, Amy L. (USA)  
 Lalonde, Don (Canada)  
 Landi, Antonio (Italy)  
 Laverde-Gutierrez, Hernando (Colombia)  
 Leclercq, Caroline Mc (France)  
 Lee, Andrew K. (USA)  
 Lee, Chung Hoon (Korea)



**11<sup>th</sup> Triennial Congress of the International  
Federation of Societies for Surgery of the Hand**

31 October - 4 November 2010

Sheraton Grande Walkerhill Hotel Seoul Korea

Lee, Donald H. (USA)  
Lee, Dong Chul (Korea)  
Lee, Jae-Hoon (Korea)  
Lee, Jun-Mo (Korea)  
Lee, Kwang-Hyun (Korea)  
Lee, Kwang-Suk (Korea)  
Lee, Sang Ki (Korea)  
Lee, Sang Seon (Korea)  
Lee, Sang-Gil P. (USA)  
Lee, Sanglim (Korea)  
Lee, Steve K. (USA)  
Lee, Young Ho (Korea)  
Lee, Joo Yup (Korea)  
Lejeune, Anne (Belgium)  
Levin, L. Scott (USA)  
Li, Zong-Ming (USA)  
Lichtman, David M. (USA)  
Light, Terry R. (USA)  
Lim, Beng-Hai (Singapore)  
Lin, Chih-Hung (Taiwan)  
Liu, Fan (China)  
Llusa, Manuel (Spain)  
Loda, Guillermo (Argentina)  
Loos, Matthew (USA)  
Lubis, Nur Rachmat (Indonesia)  
Luchetti, Riccardo (Italy)  
Mackenney, Enrique (Spain)  
Magdiev, Djamilutdin A. (Russia)  
Malizos, Konstantinos N. (Greece)  
Mass, Daniel P. (USA)  
Masson, James (Australia)  
Massoud, Abdel-Hakim (Egypt)  
Massoumi, Mas G. (USA)  
Mateev, Myrzabek A. (Kyrgyz Republic)  
Mathoulin, Christophe L. (France)  
McCabe, Steven J. (USA)  
McDonough, Barry (USA)  
Merle, Michel (France)  
Millesi, Hanno (Austria)  
Minami, Michio (Japan)  
Mizuseki, Takaya (Japan)  
Moermans, J.P. (Belgium)  
Monirul Alam, Abu Saleh Mohammed (Bangladesh)  
Monsivais, Jose J. (USA)  
Moran, Steven L. (USA)  
Moritomo, Hisao (Japan)  
Na, Young Cheon (Korea)  
Naam, Nash H. (USA)  
Nakamura, Toshiyasu (Japan)  
Neumeister, Michael W. (USA)  
Ogino, Toshihiko (Japan)

Oh, Jin-Rok (Korea)  
Oh, Suk Joon (Korea)  
Oh, Won Seok (Korea)  
Okuda, Yoshiki (Japan)  
Omokawa, Shohei (Japan)  
Osada, Denju (Japan)  
Osterman, A. Lee (USA)  
Ouellette, Elizabeth A. (USA)  
Ozkan, Turker (Turkey)  
Özkan, Mustafa (Turkey)  
Pacheco-Lopez, Ricardo C. (Mexico)  
Pardini Jr., Arlindo G. (Brazil)  
Park, Hyun Soo (Korea)  
Park, Jong Woong (Korea)  
Park, Min Jong (Korea)  
Park, Myong Chul (Korea)  
Pegoli, Loris (Italy)  
Peimer, Clayton A. (USA)  
Peng, Yeong-Pin (Singapore)  
Pillet, Jean M. (USA)  
Pire, Michel (Belgium)  
Plancher, Kevin D. (USA)  
Prommersberger, Karl-Josef (Germany)  
Prudhomme, Bonhomme Joseph (USA)  
Radzevicius, Darius (Lithuania)  
Rappold, Georg M. (Austria)  
Rhee, Seung Hwan (Korea)  
Rhee, Seung-Koo (Korea)  
Rhyou, In Hyeok (Korea)  
Ring, David C. (USA)  
Rizzo, Marco (USA)  
Roh, Tai Suk (Korea)  
Rosenwasser, Melvin P. (USA)  
Rossello, Mario Igor (Italy)  
Roux, Jean-Luc (France)  
Ryhänen, Jorma (Finland)  
Sabapathy, S. Raja (India)  
Saffar, Philippe (France)  
Sammartino, Mario Rodriguez (Argentina)  
Sandow, Michael (Australia)  
Sawaizumi, Takuya (Japan)  
Scheker, Luis (USA)  
Schenck, Robert R. (USA)  
Schoonhoven, Jörg Van (Germany)  
Schubert, Warren (USA)  
Schuind, Frédéric (Belgium)  
Seitz, Jr., William H. (USA)  
Senes, Filippo M. (Italy)  
Sennwald, Gontran R. (Switzerland)  
Seo, Jae Sung (Korea)  
Shi, Hai-Feng (China)  
Shin, Alexander Y. (USA)

Shin, Eon Kyu (USA)  
Shin, Hyun-Dae (Korea)  
Shirai, Hisaya (Japan)  
Silva, Jefferson Braga (Brazil)  
Simeonov, Lyudmil (Bulgaria)  
Simonka, János Aurél (Hungary)  
Slade III, Joseph F. (USA)  
Son, Daegu (Korea)  
Song, Seok-Whan (Korea)  
Stamate, Teodor (Romania)  
Stevanovic, Milan V. (USA)  
Sung, Seung Yong (Korea)  
Szabo, Zsolt (Hungary)  
Tak, Min-Sung (Korea)  
Takahara, Masatoshi (Japan)  
Takayama, Shinichiro (Japan)  
Takigawa, Naohide (Japan)  
Tan, Soo-Heong (Singapore)  
Tang, Jin Bo (China)  
Taras, John (USA)  
Tark, Kwan Chul (Korea)  
Teraura, Hidetoshi (Japan)  
Tetik, Cihangir (Turkey)  
Thurston, Alan J. (New Zealand)  
Tokunaga, Daisaku (Japan)  
Tu, Yuan Kun (Taiwan)  
Ueba, Yasuo (Japan)  
Ulson, Heitor J.R. (Brazil)  
Vastamäki, Martti (Scandinavia)  
Verstreken, Frederik (Belgium)  
Vesely, Jiri (Czech Republic)  
Vögelin, Esther (Switzerland)  
Waggy, Carol (USA)  
Watson, Stewart (UK)  
Wei, Fu-Chan (Taiwan)  
Weiss, Arnold-Peter C. (USA)  
Whang, Jong Ick (Korea)  
Whipple, Terry L. (USA)  
Woo, Sang-Hyun (Korea)  
Xu, Wen-Dong (China)  
Yang, Kyung Moo (Korea)  
Yang, S. Steven (USA)  
Yoon, Eul-Sik (Korea)  
Yoon, Jun O (Korea)  
Zalesak, Bohumil (Czech Republic)  
Zancolli, Eduardo R. (Argentina)  
Zolotov, Alexander (Russia)  
Zyluk, Andrzej (Poland)

\* Alphabetically ordered by last name.

\* This list will be updated.



# Call for Abstracts

Abstract submission will be available through the official IFSSH2010 website from February 2010. Abstracts received by **1 May 2010** will be considered under the standard review procedure. And late abstracts will be considered as space permits. The on-line submission is highly recommended. Submission by e-mail, fax or airmail are not allowed.

Problems experienced with the on-line system or questions related to your abstract submission(s) should be directed to secretariat by e-mail, [abstract@ifssh2010.com](mailto:abstract@ifssh2010.com), fax (+82) 2 2082-2314 or phone (+82) 2 2082-2116.

## Submission Instructions

- \* Prepare abstract(s).
  - Place abstract title, author name and contact information on the abstract.
  - Submit in English.
- \* Select ONE appropriate topic from the suggested topic list.

Basal joint arthritis / Rheumatoid arthritis / Osteoarthritis and other arthritis  
Cerebral palsy / Tetraplegia  
Congenital and pediatric  
Distal radius / Ulnar-sided wrist (DRUJ or TFCC) / Forearm / Elbow  
Nerve: carpal tunnel syndrome / other compression neuropathies  
Nerve: repair and reconstruction  
Microsurgery: soft tissue coverage / Microsurgery: thumb and finger reconstruction  
Microsurgery: others (transplantation, vascular)  
Phalanges and metacarpals / Scaphoid / Kienböck / Carpal injuries  
Tendon: basic science / Tendon: repair and reconstruction  
Tendon: tenosynovitis / trigger finger / de Quervain / others  
Tumor / Dupuytren / Infection / Rehabilitation / CRPS / Miscellaneous

- Step 1: Log on to the meeting website ([www.ifssh2010.com](http://www.ifssh2010.com)).
- Step 2: Select the On-line Abstract Submission option from the menu.
- Step 3: Select NEW USER/RETURNING USER button.
- Step 4: Enter your E-mail address and a personal PASSWORD.
- Step 5: Complete data as requested by the system.

Netscape Users: Older versions of the Netscape browser may not be compatible with the online system, causing difficulty or preventing abstract submission or data retrieval.

## Submission Confirmation

An acknowledgement of the receipt of abstract(s) will automatically be sent to the presenting author by e-mail upon on-line submission. It is the responsibility of each individual to verify the acknowledgements and carefully review the submitted abstract(s), noting that in some cases during the submission process, characters become illegible.

## Acceptance Notice

The scientific committee will make the final decision on the acceptance of abstracts for oral or poster presentations. The acceptance of abstracts will be notified by **1 June 2010**. If your abstract is accepted, please make sure that you register no later than **30 June 2010** which is the deadline of early bird registration. Unless you register on time, your abstract(s) may not be included in the congress abstract book.



# Hand Surgery Textbook

The Organizing Committee of the 11<sup>th</sup> Congress of the IFSSH is planning to publish a Hand Surgery Textbook, which will include as much new and time-tested knowledge as possible regarding the care of the hand and upper extremity. It will be a comprehensive, systematically edited textbook providing clear and brief information on hand surgery. It is our sincere hope that you will join this excellent opportunity to express your own knowledge and skills on hand surgery.

1. Title of the book: 2010 IFSSH HAND SURGERY
2. One page per paper, maximum two subjects for one participant: please see the sample.
3. Submission fee: FREE, The publication is entirely financed by the Organizing Committee.
4. Manuscripts should be 600 words or less including the title, author and institution names, as well as references. One or two figures or tables are allowed, but 50 words should be reduced from the text per one figure or table. Files for line drawing should be created at 1200 dpi, for color photographs at 600 dpi, and for black and white photographs at 300 dpi.

## TEXTBOOK EXAMPLE

### Vascularized Pronator Quadratus Arthroplasty for Advanced Kienböck's Disease

Moon Sang Chung, MD, PhD

Seoul National University College of Medicine, Seoul, Korea

#### Introduction

Advanced Kienböck's disease may include extensive collapse or fragmentation of the lunate, requiring a salvage procedure rather than unloading or revascularization. As one of salvage procedures for advanced Kienböck's disease, we have carried out excision of the lunate and insertion of a radial bone flap attached to and wrapped in vascularized pronator quadratus muscle.<sup>1</sup>

#### Surgical Procedure

The anatomical basis and use of the pronator quadratus pedicled radial bone graft has been described previously.<sup>2</sup> We used the pronator quadratus muscle as the articulating surface and the radial bone as a spacer for the lunate, which is vascularized to better maintain its volume and shape.

A zigzag palmar incision is made from the proximal one third of the palm to the forearm. The joint capsule is divided longitudinally and the collapsed lunate is separated from the surrounding carpal bones and removed completely, preserving the dorsal capsule and ligaments. About one-third of the width of the pronator quadratus muscle is marked along its course and a bone flap, which is about 1cm<sup>3</sup> and attached to the muscle, is elevated from the radius. The wrist is distracted using an external fixator. The bone flap is completely wrapped in muscle and is inserted into the empty space as a spacer for the lunate, and fixed to the dorsal capsule using pull-out sutures (Figure 1). The distractor and sutures are removed 4 to 6 weeks postoperatively and motion exercise begins.

#### Clinical Results

Between 1982 and 2000, we performed vascularized pronator quadratus arthroplasty in 48 hands with advanced Kienböck's disease and 41 patients were retrospectively reviewed at a mean follow up of 6.1 (range, 3 - 22) years. There were 17 men and 24 women and the age at the time of

operation averaged 39 (range, 19 - 58) years. By the classification system of Lichtman et al.<sup>3</sup> 13 patients were stage IIIB and 28 were stage IV. Postoperatively, pain decreased or disappeared in most of the patients. The mean extension of the wrist improved from 46° to 55° (p=0.047), and the mean flexion improved from 39° to 45° (p=0.035). The radioscaphoid angle and the carpal height ratio did not deteriorate, and only minimal progression of degenerative change was observed. Minor complication included two pin tract infections associated with temporary external fixation, and no patient underwent further surgery.

#### Summary

Vascularized pronator quadratus arthroplasty is one of effective salvage procedures for advanced Kienböck's disease, with satisfactory pain relief, motion preservation, and minimal radiographical deterioration.



Figure 1. An illustration of pronator quadratus arthroplasty for advanced Kienböck's disease

#### References

1. Gong HS, Chung MS, Lee YH, Lee S, Lee JO, Baek GH. Arthroplasty for advanced Kienböck's disease using a radial bone flap with a vascularized wrapping of pronator quadratus. *J Bone Joint Surg [Br]* 2006;88:623-8.
2. Braum RM. Pronator pedicle bone grafting in the forearm and proximal carpal row. *J Hand Surg* 1983;8:612-3.
3. Lichtman DM, Alexander AH, Mack GR, Gunther SF. Kienböck's disease: update on silicone replacement arthroplasty. *J Hand Surg [Am]* 1982;7:343-7.

※ Please refer to the congress website([www.ifssh2010.com](http://www.ifssh2010.com)) for a textbook sample of the surgical technique .

# Registration

Please complete registration through the IFSSH2010 website. The on-line registration system will be opened in **March 2010** and closed on **31 August 2010**. All registrations received after this time will be considered on site registration. For the benefit of lower registration rates, it is strongly recommended to make early registration by **30 June 2010**.

## Presenting Authors' Registration

All presenters either oral or poster presentation(s) must complete on-line registration and remit the required registration fee by **30 June 2010** in order to remain on the final program.

## Registration Fees

|                                   | Early Bird<br>~ 30 June 2010 | Advance<br>~ 31 August 2010 | On-site |
|-----------------------------------|------------------------------|-----------------------------|---------|
| Delegate                          | USD 700                      | USD 750                     | USD 800 |
| Resident & Fellow                 | USD 350                      | USD 375                     | USD 400 |
| Accompanying Persons              | USD 100                      | USD 100                     | USD 100 |
| Shoulder Day<br>(2 November only) | USD 350                      | USD 375                     | USD 400 |
| Gala Dinner<br>(2 November)       | USD 150                      | USD 150                     | USD 150 |

## Registration Fee Covers

**Delegate / Resident & Fellow:** Admission to all Sessions and Exhibition, Opening Ceremony and Welcome Reception, Congress Kit, Lunch (USD 50 Value), Coffee Breaks

**Accompanying Persons:** Admission to Opening Ceremony and Welcome Reception, Coffee Breaks, one of Accompanying Persons' Tour Programs

**Shoulder Day:** Admission to Shoulder Sessions, Lunch (USD 50 Value), Coffee Breaks on 2 November

## Methods of Payment

- ▶ Confirmations will be sent upon clearance of payment.
- ▶ Receipts will be issued at the on-site registration desk.
- ▶ Payment only in US currency will be accepted by the following methods.

### Credit Card

Persons paying with credit cards must register on-line.

### Wire Transfer

Bank account details will be informed at the congress website in March 2010.

\* For more information regarding the methods of payment, please contact the secretariat.

## General Contact for Registration

Phone (+82) 2 2082-2125 Fax (+82) 2 2082-2314 E-mail: [registration@ifssh2010.com](mailto:registration@ifssh2010.com)



## Accommodations

There are several selections of hotels blocked for IFSSH2010 Seoul participants centrally located and close to the venue. You will get the detailed information for the accommodation at the congress website, [www.ifssh2010.com](http://www.ifssh2010.com).

\*1 USD=KRW 1,107 as of January, 2010

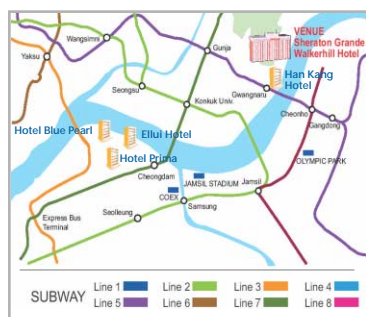
| HOTEL   | Room Type        | Room Rate (USD) |                       | Room Rate (KRW) |                       | Distance       |
|---|------------------|-----------------|-----------------------|-----------------|-----------------------|----------------|
|   |                  | Room Only       | Breakfast Included    | Room Only       | Breakfast Included    |                |
| Sheraton Grande Walkerhill Hotel (venue)<br>★★★★★ | W-Wonderful      | 271             | 295                   | 300,000         | 327,000               | Venue          |
|   | Deluxe           | 226             | 250                   | 250,000         | 277,000               |                |
|   | Douglas          | 163             | 187                   | 180,000         | 207,000               |                |
| Hotel Prima*<br>★★★★                              | Single           | 126             | Included in Room Rate | 140,000         | Included in Room Rate | 20 min by car  |
|   | Deluxe DBL/TWN   | 154             |                       | 170,000         |                       |                |
| Ellui Hotel<br>★★★★                               | Superior DBL/TWN | 108             | 122                   | 120,000         | 135,000               | 30 min by car  |
| Hotel Blue Pearl*<br>★★★                          | Deluxe DBL       | 113             | Included in Room Rate | 125,000         | Included in Room Rate | 30 min by car  |
|   | Deluxe TWN       | 134             |                       | 148,000         |                       |                |
| Han Kang Hotel<br>★★★                             | Standard DBL/TWN | 90              | 99                    | 100,000         | 110,000               | 10 min on foot |

- VAT (10%) & Service charge (11%) shall be added to the above room rates.  
The rates of Hotel Prima\* and Hotel Blue Pearl\* already include the VAT and service charge.
- The rates in US Dollar will be changed by the exchange rate of check-out date.
- Valid credit card information should be submitted in order to secure booking and room charges should be settled upon checking out directly to the hotel.

### Cancellation and Refund Policy

Cancellation must be made in writing to the secretariat at [hotel@ifssh2010.com](mailto:hotel@ifssh2010.com). If you fail to check-in on the arrival date or fail to cancel your reservation 24 hours before check-in time, it will be processed as "No-Show" and you will be charged a cancellation penalty for one night rate. Mail to: [hotel@ifssh2010.com](mailto:hotel@ifssh2010.com)

### Hotel Map (Subway)



### Reservation

The deadline for reserving a room at the discount rate is **30 September 2010**. Hotel assignments will be made on a first-come, first-served basis, and reservation made after **1 July 2010** will be subject to space availability. Prompt booking is very important to guarantee your room. Please make on-line hotel reservation through the IFSSH2010 Seoul website. If you run into any problem with on-line reservation, please contact the secretariat via e-mail, [hotel@ifssh2010.com](mailto:hotel@ifssh2010.com).

## Commercial Exhibition

IFSSH2010 Exhibition will be opened on **1 November 2010**. Participants are invited to enjoy commercial vendors and to use opportunities to acquaint themselves with some of the latest innovations and its related medical science. Companies wishing to reserve space should contact IFSSH2010 Secretariat for details.

## Useful Information

### Visa Information

Foreigners wishing to enter Republic of Korea to attend IFSSH2010 should possess valid passports and valid entry visa, if required. Visitors for sightseeing or transit with confirmed outbound tickets may stay in Korea up to 30 days without visas, except those from certain countries. For more information, please visit the Korean Ministry of Foreign Affairs and Trade at <http://www.mofat.go.kr/english/main/index.jsp>.

### Insurance and Liability

The Organizing Committee will not be responsible for medical expenses, accidents or losses or unexpected damage to property belonging to congress participants, either during or as a result of the congress or during all tours and events. Participants are strongly advised to arrange their own insurance for the health and accidents, lost luggage, and trip cancellation.

### Time Difference

Korean time is nine hours ahead of Universal Coordinated Time/Greenwich Mean Time (UCT/GMT+9hours).

### Climate & Weather

Korea has four distinct seasons: spring, summer (wet), fall and winter (dry). Especially, early November, the season for IFSSH2010, is the best time, not rainy season to visit Korea. You may enjoy the beautiful Korean fall including clear blue skies and mild weather. Early November, the temperature in Seoul average 10-15°C(50-59°F) and the weather is usually sunny. For more information, please visit Korea Meteorological Administration (<http://web.kma.go.kr/eng/index.jsp>).

### Currency & Foreign Exchange

Korea's official monetary unit is the won (KRW). Korean monetary units are ₩10, ₩50, ₩100 and ₩500 coins, and ₩1,000, ₩5,000, ₩10,000 and ₩50,000 notes. For higher denominations, negotiable casher's checks are used. One US dollar is equivalent to about KRW 1,107 as of January 2010. Major currencies and traveler's checks can be exchanged into Korean won at the airport, hotels and all Korean banks.

### Transportation

#### 1. International Airport Transportation Guide

Most international passengers use Incheon International Airport (ICN) to enter Korea. Some passengers from China or Japan may use Gimpo International Airport (GMP). Passengers arriving at ICN or GMP will need to take a limousine bus or taxi from the airport to downtown Seoul.

#### ※ Free Shuttle Service

**The Free Shuttle Service will be provided from the Incheon International Airport to the main hotels during the congress. For more information, please visit the congress website ([www.ifssh2010.com](http://www.ifssh2010.com)). Please refer to page 12 for the main hotels.**





## 2. How to get to the Venue from Airports

### - From Incheon International Airport to the Venue

By KAL Limousine Bus

| Destination                      | First Departure | Last Departure | Interval  | Travel Time | Bus Stop  | Fare       | Tel.           |
|----------------------------------|-----------------|----------------|-----------|-------------|-----------|------------|----------------|
| Sheraton Grande Walkerhill Hotel | 04:55           | 22:45          | 20-30min. | 120 min.    | 4B or 11A | KRW 14,000 | 82-2-2667-0386 |

Information and tickets for the limousine bus are available at the Transportation Information Counter on the 1st floor of the airport. For detailed information, please visit <http://www.iiac.co.kr/eng/airport/>.

By Taxi

Estimated charges for a taxi from Incheon to Sheraton Grande Walkerhill Hotel are approximately USD 60 for a general taxi (Grey-color) and USD 90 for a luxury taxi (Black-color). The passenger will also be required to pay the road toll fee of approximately USD 10. For detailed information, please visit the congress website ([www.ifssh2010.com](http://www.ifssh2010.com)).

### - From Gimpo International Airport to the Venue

|                  |  |
|------------------|--|
| <b>Direction</b> | Gimpo Airport → Sheraton Grande Walkerhill Hotel   |
| <b>Duration</b>  | 65 minutes(Subway) / 40minutes(Car)  |
| <b>Fare</b>      | Subway: KRW 1,500 → Shuttle Bus : Free of Charge<br>Taxi: KRW 45,000 (Deluxe) & 30,000 (Regular) |
| <b>Tel.</b>      | +82-2-455-5000 (Sheraton Grande Walkerhill Hotel)  |

From Gimpo Airport, you can take the Seoul Subway, Line 5 (purple line) and use a shuttle bus.

- Gwangnaru Course: Gwangnaru Subway Station, Get off at Gwangnaru station, Exit No. 2.
- Gangbyun Course: Transfer from Kkachisan Line 5 (purple line) to take Line 2 (green line). Get off at Gangbyun station, Exit No. 1.

For detailed information, please visit the congress website ([www.ifssh2010.com](http://www.ifssh2010.com)).

### - From Incheon International Airport to Hotel Prima, Ellui Hotel, Hotel Blue Pearl, Han Kang Hotel

| HOTEL            | Travel Time (minutes) | Limousine                                   |          |            | Taxi (KRW)                       |                  |
|------------------|-----------------------|---|----------|------------|----------------------------------|------------------|
|                  |                       | Bus No.                                     | Bus stop | Fare       | Destination                      | General / Luxury |
| Hotel Prima      | 60-90                 | Korea City Air Terminal Limousine Bus #6010 | 5A, 11B  | KRW 14,000 | Hotel Prima                      | 70,000 / 90,000  |
| Ellui Hotel      | 60-90                 |   |          |            | Hotel Prima and 5min walk        | 80,000 / 100,000 |
| Hotel Blue Pearl | 60-90                 |   |          |            | Hotel Prima and 5min walk        | 80,000 / 100,000 |
| Han Kang Hotel   | 100                   | KAL Limousine Bus                           | 4B, 11A  |            | Gwangnaru station and 10min walk | 70,000 / 90,000  |

\*In case of using the taxi, the road toll fee will be added.

# Tour Programs

※Conditions: Admission fee, an English-speaking guide and Coach

## Pre & Post Congress Tour

| PT1. Legendary Shilla Dynasty, Gyeongju (1N 2D) |   |
|---|---|
| Date & Time                                     | 28~29 October, 2010 / 5~6 November, 2010 (1N 2D)  |
| Price   | KRW 390,000 per person (min. 6 persons basis)   |
| Recommendation                                  | For the people who would like to go back to the legendary Shilla Dynasty and wish to see the World Cultural Asset in Korea. |

**Gyeongju**, a city of history, was the capital of the ancient Silla Dynasty for a thousand years from 57 BC to 935 AD. Blessed with the natural beauty of mountains and rivers, Gyeongju also has many relics and structures built from scientific and artistic passion, and artifacts created with its ancestors' wisdom form a "Museum without walls." Due to the bountiful historical, natural and cultural attractions, this region has long been a major tourist destination in Korea. **Bulguksa Temple** and **Seokguram Grotto** are the representative relic of Gyeongju and was designated as a World Cultural Asset by UNESCO in 1995. The beauty of the temple itself and the artistic touch of the stone relics are known throughout the world.



| PT2. Relishes the Romantic of Jeju Island (2N 3D) |   |
|---|---|
| Date & Time                                       | 27~29 October, 2010 / 5~6 November, 2010 (2N 3D)  |
| Price   | KRW 720,000 per person (min. 6 persons basis)   |
| Recommendation                                    | For the people who want to explore some of the charms of Jeju Island, a wonderfully picturesque island getaway off the country's southern shores. |

A picturesque island surrounded by the indigo sea that blends beautifully with the spectacular scenery and unique culture, Jeju is a land of wonder and enchantment. The volcanic island of Jeju will charm you with its magnificent landscapes, opening your senses. Jeju is an island that opens up a different world during each season.  
 ☺ Reservation should be made at least 3 weeks in advance.



## Half Day Tours

| HT1. Harmony of Nature and Architecture |  |
|---|--|
| Date & Time                             | 09:00~12:30  |
| Price                                   | KRW 57,000 per person (min. 10 persons basis)  |
| Recommendation                          | For the people who visited Seoul for the first time and don't have any idea where to go, what to do. |

**Gyeongbokgung Palace** is the primary residence for the royal family of Joseon Dynasty. It is the largest and most architecturally beautiful of the five palaces of Seoul. **The National Folk Museum** demonstrates Korean social and traditional life style, such as religious rituals, housing, clothing, food and social dynamics of traditional Korean life. **Cheonggyecheon Stream**, has become one of Seoul's major tourist destinations, and is a popular place for leisure and relaxation since it offers many beautiful sights to see and enjoy.





## HT2. Treasury of Korea History

**Date & Time** 09:00~12:30

**Price** KRW 57,000 per person (min. 10 persons basis)

**Recommendation** For the people who are interested in Korean History as well as shopping.

The **National Museum of Korea** holds a collection of approximately 150,000 works of art. The museum holds permanent collections of ancient artifacts, historical artifacts, works of art and Asia related cultural artifacts. **Itaewon** is the most exotic place in Seoul representing fusion culture with a distinctive atmosphere. Many people say, "You may not know Seoul, but you should know Itaewon," showing how renowned a shopping district Itaewon is.



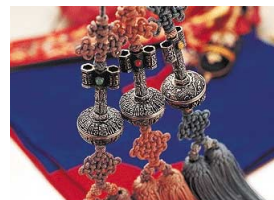
## HT3. Into the Royal Family's Life of Orient

**Date & Time** 09:00~12:30

**Price** KRW 65,000 per person (min. 10 persons basis)

**Recommendation** For the people who are wonder about the Korean Royal family's life and nobility's life.

**Changdeokgung Palace** is the second royal palace built after Gyeongbukgung Palace and it was designated as a World Cultural Heritage since it is the best preserved one among the five remaining royal palaces. The **Secret Garden** was used as a place for the kings to take a rest. There are gigantic tree that is over 300 years old, a small pond, and a pavilion, and it makes you feel like you are not in the center of Seoul. **Bukchon Hanok Village** was once a village of aristocrats long ago, and its luxury tile-roofed houses have been preserved since the Joseon Dynasty. **Dongrim Knot Museum** has on exhibit a variety of decorative traditional Korean knots. You can make beautiful traditional knot.



## HT4. Feel the Korean flavor with Kimchi

**Date & Time** 09:00~12:30

**Price** KRW 98,000 per person (min. 10 persons base)

**Recommendation** For the people who would like to make Kimchi, the most popular food and buy traditional souvenirs.

"**Kimchi**" is the best known Korean food. It is pickled vegetables, highly seasoned with pepper, garlic, etc. It is served with every kind of Korean meal and it stimulates the appetite. You can learn special ingredients of Kimchi and take them after the tour. On **Insadong Antique Street**, you can experience the harmony of antique and modern art. You can purchase various traditional handicrafts and ceramics which reflect the beat and taste of Korea so it has become a favorite shopping spot among foreigners.



## Full Day Tours

|   |  |
|---|--|
| <b>FT1. Hoping for Reunification of Korea</b> |  |
| <b>Date &amp; Time</b>                        | 08:00~15:00  |
| <b>Price</b>                                  | KRW 87,000 per person (min. 10 persons basis) including Lunch  |
| <b>Recommendation</b>                         | For the people who would like to have unique experience which will not be done in any other country. |

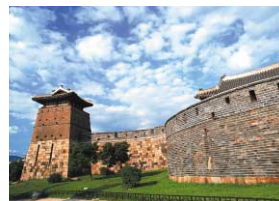
The **DMZ** is the most heavily fortified border on the planet. It has been 50 years since the Korean War ended in 1953, but the DMZ remains, dividing the Korean Peninsula. **The 3rd Infiltration Tunnel**, about 73 meters underground, and 2 meters wide and high, was conducted by North Korean to infiltrate the South. At **Dora Observatory**, you can peek into North Koreans' daily lives through a telescope. **Heyri Art Valley** is a village where arts and culture community established by writers, painters, film producers, architect and musicians. You'll see workshops, galleries, museums and other cultural and artistic spaces.



☺ **Essential Requirement: original passport should be with you on the tour date.**

|                                   |   |
|-----------------------------------|---|
| <b>FT2. Back to Ancient Korea</b> |   |
| <b>Date &amp; Time</b>            | 09:00~16:30   |
| <b>Price</b>                      | KRW 95,000 per person (min. 10 persons basis) including Lunch                             |
| <b>Recommendation</b>             | For the people who like to get away from Seoul and want to go back to the Joseon Dynasty. |

**Suwon Hwaseong Fortress** embraces the downtown area of Suwon. It is a well-preserved architecture of the Joseon Dynasty built of stone and oven-baked bricks over two years from 1794. Also, it is included on UNESCO's list of World Cultural Heritage in 1997. Go back to 19th century by visit **Korean Folk Village**. In the village there are common people's houses from different parts of the country, an oriental medicine house, house for the study of Chinese characters, a blacksmith's, a handicraft room, a pottery oven and a marketplace. Suwon Hwaseong Fortress and Korean Folk Village are about one hour from Seoul city.



|  |   |
|--|---|
| <b>FT3. Getting to know much about Seoul</b> |   |
| <b>Date &amp; Time</b>                       | 09:00~16:30   |
| <b>Price</b>                                 | KRW 75,000 per person (min. 10 persons basis) including Lunch                                     |
| <b>Recommendation</b>                        | For the people who want to know more about Seoul and purchase souvenirs for families and friends. |

Located at the corner of Seoul's busiest downtown intersection, **Deoksugung Palace** is the only palace that sits alongside a series of western style buildings that add to the uniqueness of the surrounding scenery. You can also see the royal guard changing ceremony. **Namsan Hanok Village** is a restoration of five traditional Korean houses from Joseon Dynasty taking you back to Korea's past. **N Seoul Tower** is located at the center of Seoul and with a commanding view of Seoul; N Seoul Tower is quipped with observatories and a revolving restaurant for a full 360° view. **Namdaemun Market** is the biggest traditional market in Korea selling children clothing, men & women clothing and kitchenware. You can buy Gim (seaweed), Kimchi, and ginseng for souvenirs.







#### FT4. Temple Life of Korea

|                        |  |
|------------------------|--|
| <b>Date &amp; Time</b> | 08:00~15:00  |
| <b>Price</b>           | KRW 90,000 per person (min. 10 persons basis) including Lunch  |
| <b>Recommendation</b>  | For the people who would like to find their 'true self' amongst the harmony of nature while staying at a temple. |

**Myogak-sa** is about 40 minutes drive away to the north. It is located in Hyeonwa-dong, university area in Seoul. Temple Stay at Myogak-sa is a cultural-experience program designed to help people understand Korean Buddhism better. Temple stay offers various kinds of practicing methods such as **Dado (tea ceremony)** and **Seon Meditation** which is a form of meditation that allows a person to reflect on oneself. You can find their 'true self' amongst the harmony of nature while staying at a temple. After this tour, you will come back home richer at heart, more fully alive, more fully awake, more fully at peace.



### Night Tours

#### NT1. Night Cruise Tour

|                        |   |
|------------------------|---|
| <b>Date &amp; Time</b> | 17:00~22:30   |
| <b>Price</b>           | KRW 85,000 per person (min. 10 persons) including Dinner  |
| <b>Recommendation</b>  | For the people who would like to enjoy the best night view of Seoul and spend romantic autumn night on the Han River. |

The **63-Building's observation** is crowded with many visitors every year. The building is 264m above the sea level and 249m above the ground level. You can see the panoramic view of Han River and Seoul city. **Han River Cruise** in the autumn evening will refresh you with fresh air and riverside view. The Han River runs through the heart of Seoul, providing a retreat from the skyscrapers of the city.



#### NT2. Korean traditional performance - Cheongdong Theater

|                        |  |
|------------------------|--|
| <b>Date &amp; Time</b> | 17:00~22:30  |
| <b>Price</b>           | KRW 85,000 per person (min. 10 persons) including Dinner   |
| <b>Recommendation</b>  | Do not miss the pleasure of enjoying Korean traditional performance which was inherited more than hundreds of years. |

**Deoksugung Palace street** is one of the most beautiful and romantic roads in Seoul so that many couples come here to take a walk. **Cheongdong Theater** is the representative traditional art performance theatre of Korea. With diverse cultural surrounding facilities, Cheongdong Theater has become a popular tourist attraction site. The main program of Cheongdong Theater is the 'Traditional Art Performance'. The Traditional Art Performance **'MISO'** is presented everyday and has become a place where we introduce our traditional art to foreigners. Cheongdong Theater's 'Ssamji Madang' has become a cultural site for the public. It is where special event performances usually take place.







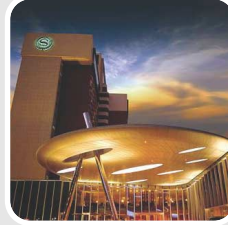
# IFSSH 2010

Triennial Congress of  
the International Federation of Societies  
for Surgery of the Hand

31 October - 4 November 2010

Sheraton Grande Walkerhill Hotel  
Seoul Korea

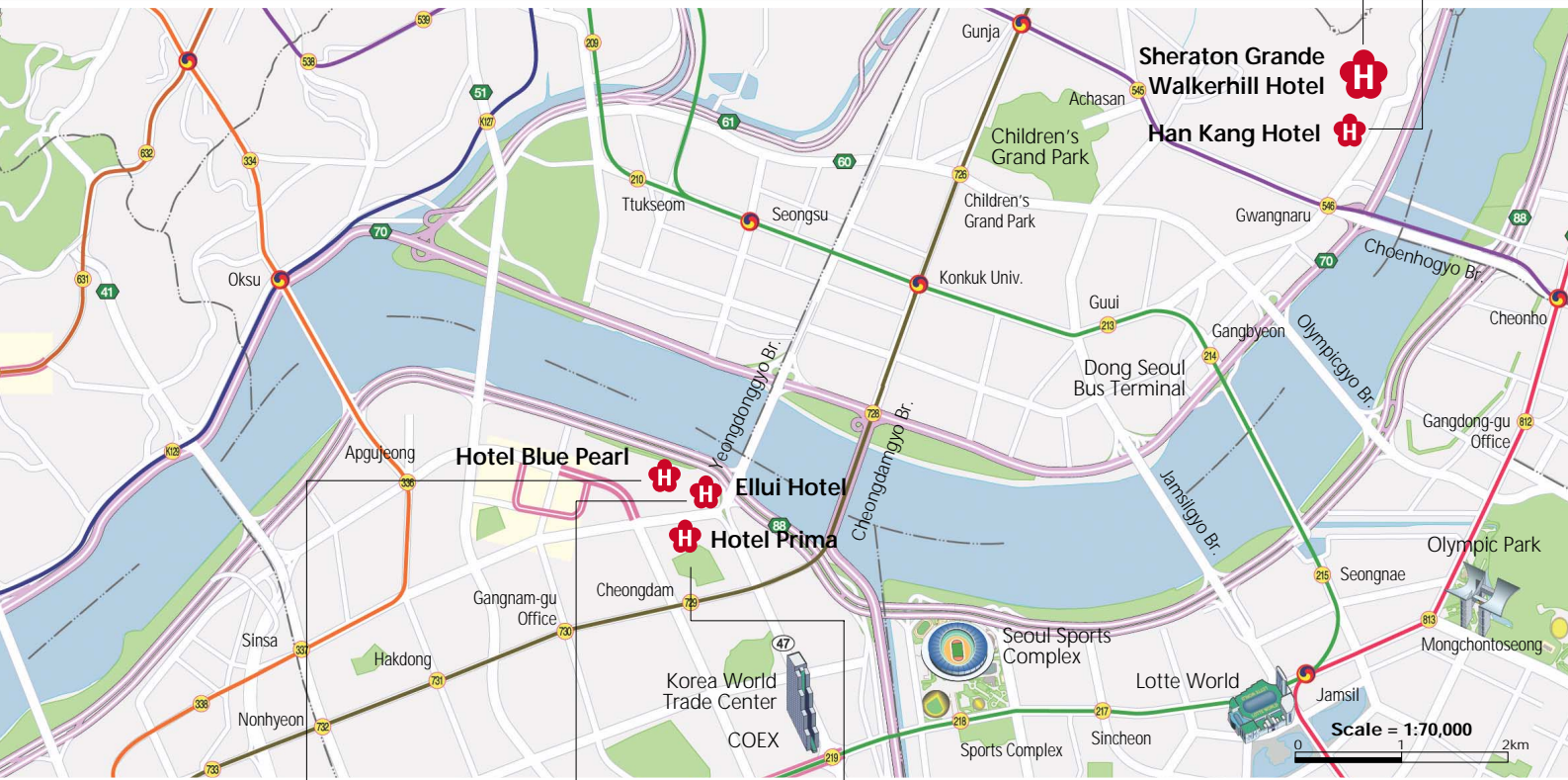
Sheraton Grande  
Walkerhill Hotel



Han Kang Hotel



## Hotel Map



Hotel Blue Pearl



Ellui Hotel



Hotel Prima



# IFSSH 2010

*11<sup>th</sup>* Triennial Congress of  
the International Federation of Societies  
for Surgery of the Hand

31 October - 4 November 2010

Sheraton Grande Walkerhill Hotel Seoul Korea

---

## IFSSH2010 Secretariat (MECI)

Rm. 1906, 19th floor Daerung Post Tower #1 212-8 Guro-dong, Guro-gu, Seoul 152-790, Korea

Phone (+82) 2 2082-2310 Fax (+82) 2 2082-2314 E-mail: [ifssh@ifssh2010.com](mailto:ifssh@ifssh2010.com)

Website: [www.ifssh2010.com](http://www.ifssh2010.com)



KOREA  
TOURISM  
ORGANIZATION



Seoul  
TOURISM &  
MARKETING